

Alam Alsahara

Petroleum Services; Training; Consulting and Supplies



***Training &
Consulting***

**Petroleum
Services**

***Inspection
Services***

Supplies





ABOUT US

We are competent Oil Field/Industrial Training Experts who strive to provide a multitude of services correlated to consultation, supplies, and inspection.

At Alam Al Sahara, we aspire to enhance and improve a company's performance by providing a full range of Courses such as Well Control, HSE, Hydraulics, and Mechanical courses in addition to customized technical training for different specialities.

Mission and Vision

To provide the best-in-class Well Control and Safety Certification, Technical & Industrial training that is required to prepare a skilled and competent workforce for the industry in MENA and Asia Pacific region and other regions through accredited programs and on-the-job training that is designed based on requirements To be world-class training provider.



CHAIRMAN'S WORD

Dr. Adel
Hassanein Abdel Aziz



At Alam Al Sahara, our training and consulting services flourish through our multinational team of highly experienced, knowledgeable, and professional instructors and consultants.

In the scope of the training industry, teaching and delivery of knowledge has extremely developed, with the development of knowledge delivery, the execution must also change, considering the wide spectrum of trainees.

Therefore, we are continuously modifying and upgrading our training KPI's to suit the needs of our trainees and the ever-flowing circulation of knowledge and new curriculum.

Education must be sought with great strides of enthusiasm. As a training provider, we strive to not only provide innovatively methods of training but also allow trainees to gain more skills from their training in a creative manner.

Whether it be through technical knowledge, hands-on experience, or personal gain, Alam Al Sahara encourages its participants to have a remarkable training experience through their involvement, which will ensure value addition to their practical and personal life in the short term and long term.

On behalf of Alam Al Sahara Executive Board and our training professionals around the world, we look forward to understanding our clients' needs, delivering training that meets those needs, and supporting our candidates as they pursue their career goals.

Alam Al Sahara Petroleum and Supply chain Services, as Global company, has a network of API-certified leading Rig Inspection Services, Engineering and Drilling Rigs and Drilling Components Manufacturing Companies including Substructure, Mast, Crown Block, Mud Pump, Sheaves, Drawworks, Wire-line Anchor, Mud/Water Tank, Loading Ram, Poorboy Gas Separator, Pumps, and Experts in Power Generation Solutions and other products.



ALAM ALSAHARA ACCREDITATIONS

COMMITTED TO HIGHER TRAINING STANDARDS





ALAM ALSAHARA CLIENTS





Alam Alsahara

Petroleum Services; Training; Consulting and Supplies

ALAM ALSAHARA PARTNERS



Alam Alsahara

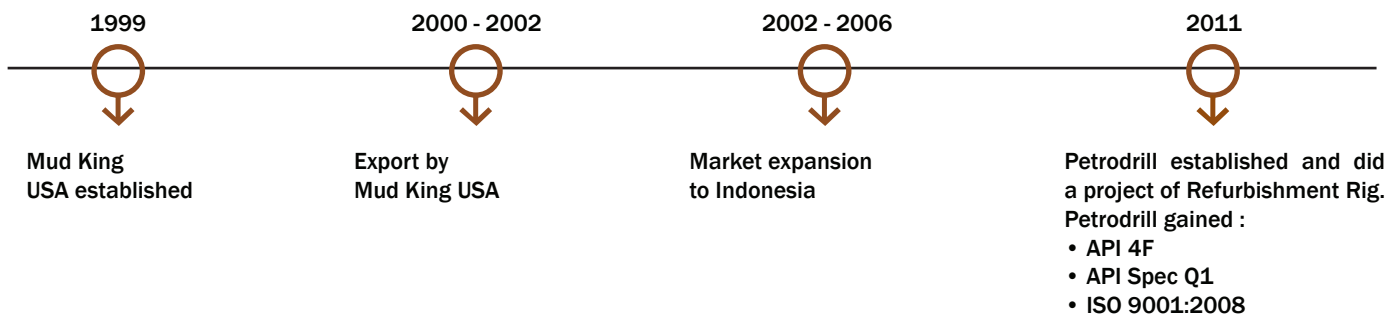
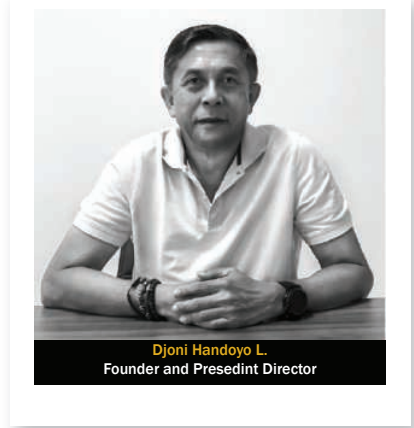
Petroleum Services; Training; Consulting and Supplies





Alam Alsahara has the exclusive right to promote and sell Petro Drill products in MENA countries such as Egypt, Libya, Sudan, the Kingdom of Saudi Arabia, Bahrain, Iraq, Algeria, and Romania, among others.

PT. Petrodrill Manufaktur Indonesia is an API certified leading Engineering and Manufacturing Company for Drilling Rig and Drilling Components such as Substructure, Mast, Crown Block, Mud Pump, Sheaves, Drawworks, Wire-line Anchor, Mud/Water Tank, Loading Ram, Poorboy Gas Separator, and many others. We strive to deliver sustainable growth and long terms value to our clients.



EXPERIENCE IN RIGFABRICATION



API & ISO STANDARD



EXPERIENCE IN PUMP DEVELOPMENT



GOOD PROJECT MANAGEMENT SYSTEM

QUALITY POLICY

Providing our customers with products that meet even exceed their requirements, the requirements of recognized standards and to continually improve the effectiveness of our quality management system.

We accomplish this by following our procedures and establishing objectives that recognize customer satisfaction as the primary goal





Production Capabilities

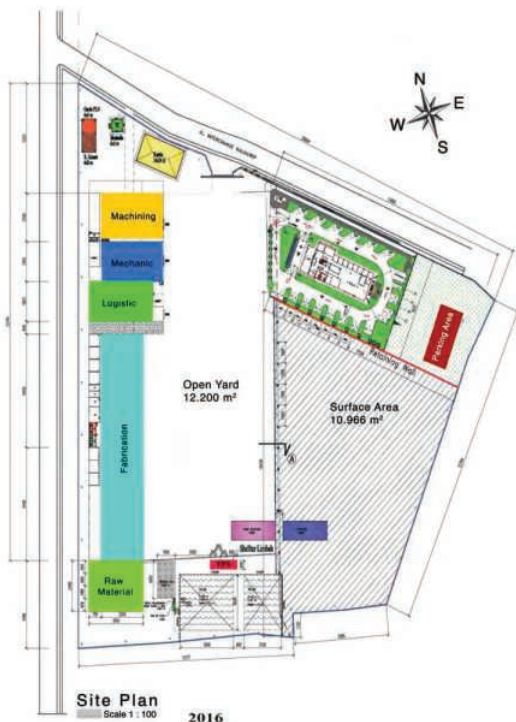
In the production line we have advanced machines, lathe machine tools and very modern welding machines. We always uphold the principles and rules of the latest American Petroleum Institute (API) requirements, especially for API 4F PSL 1, API 7K and API 8C PSL 1.



Innovation and Engineering

We divided the work in accordance with such competence in Engineering; Application Engineer, Structural Engineer, System Engineering, Technical Support, Prime Mover and Utility. Our engineering using a variety of sophisticated software that can do 3D Solid Modeling, Calculation and Verification, Simulation and Animation.

We have a fully integrated solution of any problem from customers.



Factory

Kawasan Industri Mandala Pratama Permai Jl. Akses Tol Kalihurip Km 68-70
Kec. Cikampek, Kab. Karawang
Jawa Barat, Indonesia.



Alam Alshara

Petroleum Services; Training; Consulting and Supplies



Alam Alshara has the unique right to market and sell PT.MULTIKARYA ASIA PASIFIK RAYA (MK) goods in MENA nations including Egypt, Libya, Sudan, the Kingdom of Saudi Arabia, Bahrain, Iraq, Algeria, Romania and others.

PUMPS, RIG EQUIPMENTS & POWER GENERATION SOLUTIONS

As a national company in our field, MKAPR has more to offer than just our excellent products. We offer more partnership more know-how more services be it the installation and commissioning of your equipment, its maintenance and repair, custom service concepts, or eventually replacement.

Our services cover more than our own products, as well as quality replacement parts of major name brands MKAPR looks after your pump units at any stage of their life cycle!

Comprehensive Pump Offering

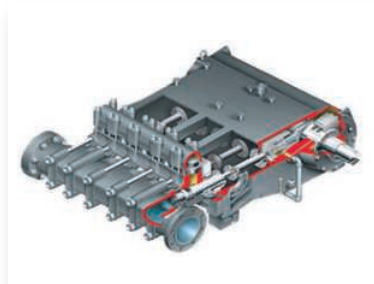
Offering plunger pumps from 65HP to 300HP & piston pumps from 300HP to 1600HP for drilling services, water transfer pumps with single and multistage centrifugal with all parts 100% interchangeable with OEM.

All pumps are inspected and tested prior to shipment.



Worldwide Product Support

- USA (Houston, Texas)
- Canada (Alberta)
- Mexico
- Middle East (Dubai)
- S.E. Asia (Jakarta)



- Business Expertise
- Flexibility
- Reduced Downtime



Horizontal Multistage Pumps

Multistage pumps available in both engine or motor driven Pumps can be used in applications such as:

- Water Transfer
- Water Boosting
- Pressurized Systems and
- High Lift Irrigation Schemes.
- Gland packed I Mechanical seal
- 50Hz / 60Hz available for motor applications
- Delivery size, up to 300 LPM
- Capacity up to 1000 mMIr
- Head up to 750 meters
- Temperature (-) 10 ' C to 140 'C
- Guaranteed product support for both rental and purchase - 24/ 7/365





The Double Life Corporation

The double life family of pumps are designed are engineering for provide long lasting, low maintenance service in many industry. The heavy duty pump have been filed tested and meet the most exacting standards for rugged and

Demanding applications. The double life corporation will offer the best choice for intended application, taking into consideration fluid conditions.



Double life pump performance give them the edge in industrial operation due to:

- High temperature
- Pumping highly abrasive
- Corrosive fluids
- High volume
- High viscosity

Applications:

- Chemical refinery, industrial construction and agricultural
- Wash down
- Supercharging
- Degassing
- Mud mixing and shearing operations
- Centrifugal feed
- Desanding and desilting
- Mud cooling tower



Reliability +
Productivity

Short Payback +
Long-Term ROI

Maintenance +
Upgrades

Service + Support



275GL+ w/ESM2 Engine

For more than 100 years, Waukesha Engine has been committed to evolving engine technologies. Waukesha's newest generation of the 275GL+ with ESM2 gas engine provides optimum performance in gas compression and other mechanical drive applications. Combining improved cover and enhanced efficiency, the 275GL+ with ESM2 meets the constant demanded of today's oil and gas industry.



MmobileFLEX Engine

The Waukesha mobileFLEX gas engine and genset portfolio with EPA Mobile Certification is the latest advancement to deliver lower-cost lower-emission cover to drill rigs, artificial lift enhanced oil recovery and oilfield equipment. An all gas alternative to diesel units, MobileFLEX is an EPA mobile-certified solution that provides a cost advantage to energy producers and operational advantage to drilling contractors by utilizing field gases.

“IMPROVING SYSTEM PERFORMANCE”



Certificate No. EMS 00112



Certificate No. QSC 00845



Certificate No. OSH 00954



Lembaga Sertifikasi Sistem Manajemen Lingkungan
LSSML-001-IDN



Alam Alshara is one of the most powerful agents of magnetic control in three distinct countries: Egypt, Libya, and Sudan.

ABOUT US

Magnetic Control Factory was setup under Made in KSA Vision 2030 for developing, manufacturing and selling innovative, high quality equipment of dry type transformers in AL-Kharj Industrial City, Kingdom of Saudi Arabia.

Our customers are typically large electrical power utility, IT industries and OEM companies worldwide. Our latest technology includes high quality design and a genuine maintenance free operation with outstanding and lasting performance.

We have a facility to provide a complete range of transformer products supported by a team of qualified, skilled and dedicated engineers, technicians, supervisors and quality control.

We are dedicated to the highest level of service and quality at competitive prices and can provide all type of LV Transformer (Indoor & Outdoor application), Dry Type and Oil Type as per the requirements of customers.



OUR FACTORY - AL-KHARJ INDUSTRIAL CITY

OUR WIDE RANGE OF PRODUCTS ARE

- ISOLATION TRANSFORMERS
- K RATED ISOLATION TRANSFORMERS
- CAST RESIN ISOLATION TRANSFORMERS
- ULTRA ISOLATION TRANSFORMERS
- STEP UP AND STEP DOWN AUTO TRANSFORMERS
- DRIVE INPUT AND OUTPUT CHOKES
- TUNED AND DE-TUNED HARMONIC REACTORS
- VARIABLE AUTO TRANSFORMERS
- SERVO CONTROLLED VOLTAGE STABILIZERS



ENGINEERING CERTIFICATES

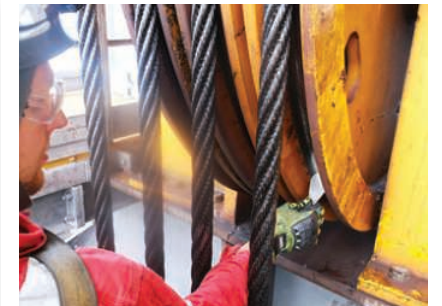




Rig Inspection

Alam Al Sahara Rig Inspection Services are types of the General Risk Based Inspection (RBI) and strictly conducted in accordance with the industry standards and recommended practice such as API, IADC, ASNT, AWS, ANSI, ASME and OSHA as well as the recommendations of Original Equipment Manufacturer (OEM) to ensure safety, reliability and durability.

Alam Al Sahara Rig Inspection Services provide analytical traceable Rig Action Tracker (RAT) with ranking criteria of the defects as per Risk assessment matrix for the critical items which may lead to loss of life or serious injuries, major for items which may damage the assets or harm the environment or minor for those defects which may cause down time for the operations and reported with statistical Analysis for open and closed items and the recommendation for the corrective action Based on the best recommended practices and international standards or customer specific requirements to deliver the most effective audit system to ensure that drilling contractors and drilling rigs have the ability to maintain the highest performance.



With A Commitment To Maintaining The Standards Of The Oil And Gas Industry, We Offer You Cost-Effective And Professional Services To Ensure The Safety And Reliability Of Your Operations.

We will help you to:

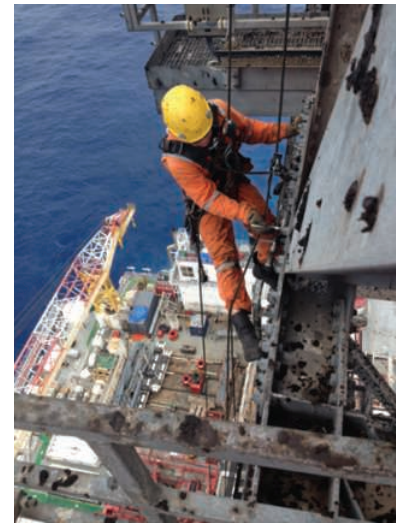
- Monitor the condition of your rig equipment
- Detect and locate internal and external, corrosion, pitting, cuts, gouges, wall loss, and fatigue cracks before they result in severe damage
- Ensure the operational integrity of your rig and comply with the latest regulations and standards
- Manage safety cost-effectively through comprehensive inspection and risk ranking
- Deploy the most appropriate action for damage that cannot be detected in advance
- Predict and avoid potential failures





Our Rig Inspection Services Include:

- Full Condition Survey
- Routine Rig Audit (Rig Acceptance / Pre-spud Test)
- Planned Maintenance Schedules like Cat III and Cat IV
- Accident Incident Investigation and Root Cause Analysis with recommendations for the corrective actions
- Stress and Structural analysis for unidentified Rig structures
- Corrosion survey and painting inspection
- Dropped objects Surveys
- Rope Access techniques



RIG EQUIPMENT INSPECTION CAT III & CAT IV:



In collaboration with our partner, Petrodrill, one of the leading companies in rig manufacturing and refurbishment, We Conduct Cat IV Inspection for Rig Equipment like TOP Drive systems, Hook blocks, Kelly systems, Rotary tables, Mud pumps, Draw works, Derrick and Substructure and Tubular handling tools (Handling tools) as per API Recommended Practice like API RP 8B, API RP 7L, API RP 4G and OEM Recommendation to detect any defects like cracks or wearing and do the recommended repair or replacement as applicable, provide the spare parts needed, perform all required NDT and after re-assembly of the equipment we do all tests required then issue the COC certificate of Compliance with the Data Book as a permanent record in the equipment File

REFURBISHMENT

Alam Al Sahara is proud to provide any Rig refurbishment for Carrier and Trailer mounted Rigs from 150 HP to 750 HP rig capacity. We consider cost efficiency required by our customers by using parts/equipment that feasible to use/repairable. We also provides engineering calculation for the rig to be refurbished for obtaining operation permit through our partnership with Petrodrill the Asian company with American technical support





ALAM ALSAHARA INSPECTION SERVICES

Alam Alshara Provides wide range of inspection activities and Services for various industries rather than Oil & Gas like Petrochemicals, Fertilizers and Construction.

1. Non-Destructive Testing (NDT)

NDT is considered as the core job for inspection services as each kind of inspection rely on verifying that neither cracks, wear nor elongation have be progressed as a result of induced stress of operation this beside the good condition, dimensional and functionality verification.

These services are as follows:

- | | |
|---|---|
| a) Magnetic particles inspection (MPI) | e) Radiographic Testing (RT) |
| b) Electromagnetic inspection (EMI) | f) Eddy Current Testing (ET) |
| c) Ultrasonic thickness measurements (UT) | g) Remote Visual Inspection/Borescope (RVI) |
| d) Dye penetrant inspection (PT) | h) Phased Array Ultrasonic (PAUT) |

2. Tubular items inspections for OCTG, Drill Pipe & BHA

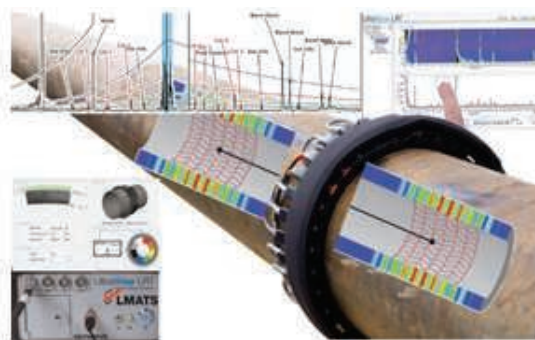
Alam Al Sahara provides Inspection for all sizes and types of Drill pipe, BHA and OCTG (Tubing and casing) using the international standards and codes API and rely on the conventional and advanced NDT like (MPI, UT, RT, EMI and RVI).



3. Advanced NDT Services

Alam Alshara provides the latest and advanced NDT services for the following:

- Tank Inspection (MFL, RMS, AE and online Robotic Inspection)
- Pipe Line Inspection (Long Range Ultra sonic Testing -LRUT)
- Heat Exchanger Tubing Inspection (RFT, NFT, MFT, ECT & IRIS)
- Insulated Component Inspection (Pulsed Eddy Current Test)





4. Lifting Equipment inspection

Using the international standards and codes BS, ASME & ISO, LEEA (Lifting equipment Engineering association) & NSL (North Sea lifting), we provide thorough examination and testing for both types of Equipment (Lifting Appliances & Lifting Accessories)



Lifting Appliances



Lifting Accessories

5. Rope Access techniques

Alam Alshara Provides Rope Access services through certified experts in the field of Rope Access Techniques with IRATA levels I, II & III.

We believe using rope access has a number of benefits over scaffolding or cranes as Rope access is adaptable to almost any situation onshore and offshore. Also Rope access is relatively fast to set up and dismantle, thus increasing the inspection time window.



6. Dropped Objects Survey

Alam Alshara Provides Dropped Objects Survey services using the DROPS recommended practice codes, Areas that we typically cover on a full survey can include but not limited to: Derricks & Masts, Jack House & Legs, Rig Equipment, Deck & Gantry Cranes, Leg Columns, Flare Stacks, Helideck Structure... etc.





RIG AND DRILLING EQUIPMENT SUPPLY



PD 150 - 250 (MOBILE RIGS)



PD 350 (MOBILE RIGS)



API Drawworks and components



Wire-line Anchor



PD 1000 (LAND RIGS)



PD 1500 (LAND RIGS)



Crown Block Assembly and Crown
Block sheaves



PD 150 - 550 (CRAWLER RIGS)



550HP Offshore Rig



PD 450 - 550 (MOBILE RIGS)



API Mud Pumps



Mud Hopper on Skid



750HP Cantilever Mast
& Substructure (Land Rigs)



Chock Manifold and Mud Gas Separator



Trailer Mounted Mud Pump with
Chock manifold and Poor Boy



Trailer Mounted Caravans



Cat head



Slip



Single Joint Elevators



Manual Tongs



IBOP (Inside Blow
Out Preventer)



Side door Elevators



Semi-Trailer Mounted Generator-Set



Shaker Tank



Sewage Treatment Unit



Hydraulic unit



Shale Shaker



Weight Indicator



Hydraulic slip



Desander



Vacuum Degasser



Flare Ignition Device



Full opening safety valve



Power tong



Chiksan swivel



Desilter



Agitator



Centrifuge



Sand Pump



Mud Cleaner



Safety Clamp



Oil Tank



Casing circulating head



Alam Al-Sahara

Petroleum Services; Training; Consulting and Supplies

TRAINING COURSES



OIL & GAS SAFETY COURSES SOFT SKILLS



OIL & GAS COURSES (WELL CONTROL)

IADC Wellsharp (Well Control)



- Wellsharp Drilling Operation Awareness Course
- Wellsharp Drilling Operation Introductory Course
- Wellsharp Drilling Operation Driller Surface Stack Course
- Wellsharp Drilling Operation Driller Combined Surface and Subsea Stack Course
- Wellsharp Drilling Operation Supervisor Surface stack Course
- Wellsharp Drilling Operation Supervisor Subsea stack Course
- Wellsharp Drilling Operation Supervisor Combined surface and Subsea stack Course
- WellSharp Well Servicing Introductory
- WellSharp Well Servicing Wireline Course
- WellSharp Well Servicing Coiled Tubing Course
- nWellSharp Well Servicing Snubbing Course
- WellSharp Well Servicing for Oil & Gas Operator Representative Workover & Intervention
- WellSharp Well Servicing Workover Course



IWCF(Well Control)



- IWCF Well Control Drilling Operations Level 2
- IWCF Well Control Drilling Operations Level 3 & 4 Surface and subsea Stack
- IWCF Pressure Control Well intervention Level 2
- IWCF Pressure Control Well intervention Level 3&4 Surface Stack



OIL & GAS COURSES (TECHNICAL COURSES)

IADC DIT

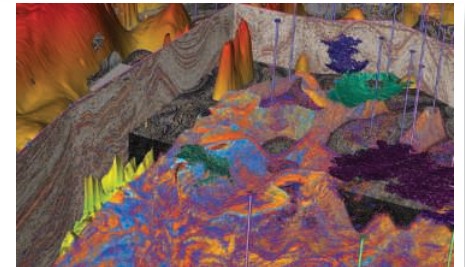
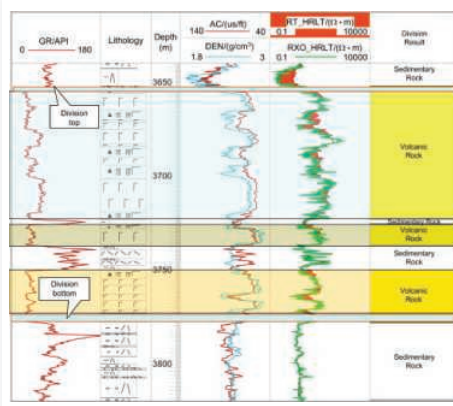
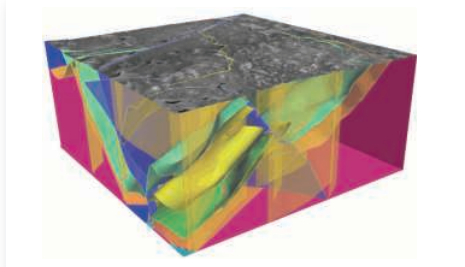
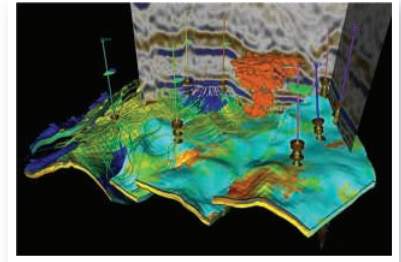


- Advanced Mud
- Basic Mud School
- Coiled Tubing Engineering
- Coiled Tubing Operations
- Environmental Pollution and Control
- Introduction for Oil & Gas Industry
- Rig Equipment Inspection
- SlickLine Operations
- Stuck Pipe Prevention
- Advanced of Coiled Tubing Operations
- Advanced Well Completion and Work over Technologies
- Artificial Lift Systems and Technology
- Coiled Tubing Technical and Advanced Technology
- Completion and Workover
- Fishing, Perforating and Other Slickline Application
- Flow Assurance (Theory, Problems & Treatments)
- Fundamental of Coiled Tubing Operations
- Horizontal and Multilateral Wells: Completions and Stimulation
- Hydraulic Fracturing Applications
- Nitrogen Maintenance and Operations
- Stimulations and Matrix Acidizing
- Well Intervention (Well Completion, Wireline and Coiled Tubing Operations)
- Well Services Slickline Operation
- Well Stimulation Techniques
- Well Stimulation: Practical and Applied

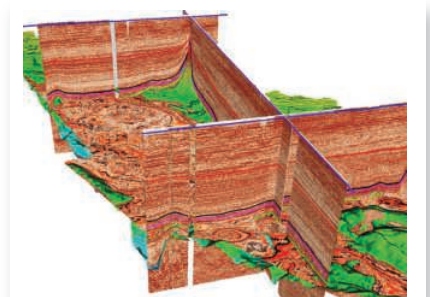


Geology, Petrophysics, Reservoir Engineering & Field Operation

- 3D Reservoir Modeling
- Advanced Petro physics and Formation Evaluation
- Advanced Reservoir Engineering
- Advanced Seismic Data Acquisition & Processing & QC
- Advanced Sequence Stratigraphy
- Advanced Structure Geology
- Applied Techniques in Sedimentology
- Basic Petroleum Geology
- Basic Reservoir Engineering
- Basic Seismic Exploration
- Basic Well Logging
- Basic Well Test Design and Analysis
- Basics of Petro physics
- Basics Structure Geology
- Basin Analysis
- Bid Round & Prospect Evaluation
- Cased Hole & Production Logging
- Cased Hole & Production Logging
- Casing Designed & Cementing
- Deepwater Well Engineering
- Directional, Horizontal and Multilateral Drilling
- Drill String and Bha Design
- Drilling Practices
- Formation Pore Pressure Estimation
- Gas Measurements
- Geomechanics for Drilling
- Hydraulics and Optimization Of Drilling Parameters Course
- IADC Dit Introduction for Oil & Gas Industry
- IADC Dit Stuck Pipe Prevention
- Integration of Petro physics and Core Analysis
- Logging While Drilling Tools and Theory
- LWD Basic Well Logging & Interpretation



- Managing Wellsite Operation
- Mud Logging Courses
- New Resistivity Technology Tools & Thin Bed Analysis
- Oil Treatment
- Organic Geochemistry
- Petro physics Of Unconventional Reservoirs
- Petroleum Reservoir Evaluation
- Petroleum Reservoir Management
- Petroleum Subsurface Geology
- Prospect & Play Assessment
- Reservoir Characterization (Clastics & Carbonate)
- Reservoir Fluid Properties and Eos
- Rock Mechanics
- Sedimentary Basins
- Seismic Attributes, AVO & Inversion
- Seismic Imaging of Subsurface Geology
- Seismic Sequence Stratigraphy Interpretation & Workshop
- Seismic Survey
- Seismic Velocity Imaging
- Shaly Sand Petro physics
- Subsurface Structural Mapping
- Well Hydraulic & Mud Rheology
- Wellsite Geology
- Witnessing Wireline Operations



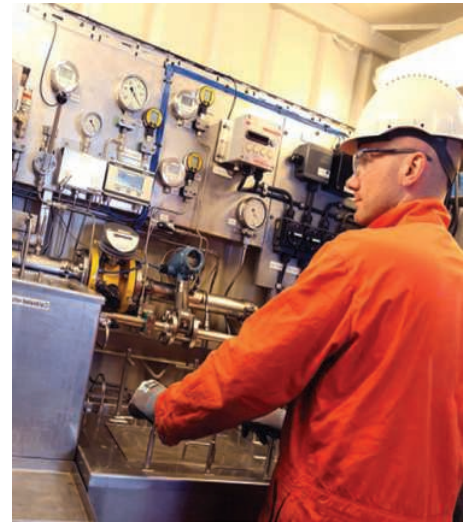


Drilling fluids & solid control equipment

- Introduction to Drilling Fluids
- Introduction to Drilling and Well Operation
- Advanced Drilling Fluids
- Advanced Completion Fluids
- Solid Control Systems

IADC Rig Pass

- IADC RigPass (Safety Orientation Off Shore)
- IADC RigPass (Safety Orientation On Shore)
- IADC RigPass (Safety Orientation On Shore and Off Shore)

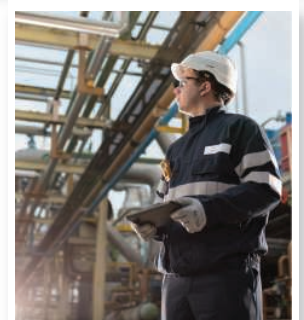
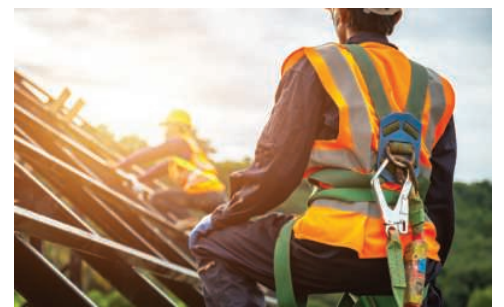


SAFETY COURSES

IADC DIT

- Asbestos Awareness Train the Trainer
- Confined Space Train the Trainer
- Crane operator train the trainer
- Defensive Driving Train the Trainer
- Dropped Objects Prevention Train the Trainer
- First Aid, AED and CPR Train the Trainer
- Forklift Operations and Safety Train the Trainer
- Gas Tester Train the Trainer
- H2S and SCBA Safety Train the Trainer
- Hazard Communication Train the Trainer
- Hazard Recognition Train the Trainer
- Lockout/Tagout Train the Trainer
- Manual Handling Train the Trainer
- Permit to Work Train the Trainer
- Respiratory Protection Train the Trainer
- Rigging and Lifting Train the Trainer
- Spill Prevention Train the Trainer
- Train the trainer

- Basic Safe Chemical Handling
- Confined Space
- Defensive Driving - Heavy Vehicles
- Defensive Driving - Light Vehicles
- Drop Object Prevention
- Fall Protection & Working at Heights
- Fire Safety
- Fire Warden/Marshal Safety Course
- First Aid
- Gas Tester
- H2S Awareness
- Hazard Communication
- Hazard Recognition
- Lockout/Tagout
- Mobile Elevated Work Platform
- Root cause Analysis
- Safe Loading and Unloading
- Safe Welding, Cutting and Brazing
- Scaffolding Safety, Erection and Dismantling



NEBOSH

- International Oil and Gas Certificate English
- International General Certificate 2018 spec IG1,IG2 (Arabic and English)
- Health and Safety at Work Qualification (Arabic and English)





IOSH

- IOSH Working Safely
- IOSH Managing Safely



AOSH

- Level II Award in First Aid at Work
- Level III Award in First Aid at Work
- Level III Award in Pediatric First Aid
- Level II Award in Environmental Principles & Best Practices
- Level III Award in Environmental Management
- Certified Master Trainer
- Level I Award in Fire Safety Awareness
- Level II Award in Fire Safety Principles
- Level III Award in Fire Safety Risk Assessment and Control
- Accident Investigation
- Level II Award in COSHH
- Level II Award in Health & Safety at Work Place
- Level II Award in Manual Handling - Principles and Practices
- Level II Award in Risk Assessment
- Level III Award in Emergency Rescue from Confined Space
- Level III Award in Health & Safety at Work Place
- Level III Award in Risk Assessment
- Level IV Award in Health & Safety at Work Place
- Manual Handling Train The Trainer
- Safety Analysis
- Stress Management
- Level II Award in Food Safety (Catering, Manufacturing and Retail)
- Level II Award in Principles of HACCP
- Level II Award in HACCP based Food Safety System in Manufacturing
- Level III Award in Food Safety Supervision (Catering, Manufacturing and Retail)
- Level IV Award in Managing Food Safety in Catering
- Level IV Award in Food Safety Management for Manufacturing



LEEA

- Lifting and Slings Standards Worldwide
- Rigger 1
- Rigger 2





NASP

- NASP 10 Hour - Construction
- NASP 10 Hour - General Industry
- NASP 30 Hour - Construction
- NASP 30 Hour - General Industry
- Arc Flash Protection
- Back Safety
- Bloodborne Pathogens
- Changing Safety Behavior
- Compressed Gas
- Confined Space Entry
- Egress/Fire Safety
- Electrical Safety
- Ergonomics
- Hazard Communication
- Hazardous Materials
- HAZWOPER Awareness
- Lockout Tagout
- Machine Guarding
- Occupational Safety and Health Advanced Diploma
- Occupational Safety and Health Basic Diploma
- Occupational Safety and Health Supervisor Diploma
- OSHA Inspections and Penalties
- Personal Protective Equipment (PPE)
- Record Keeping
- Slips, Trips, and Falls
- Walk/Work Surfaces
- Weld/Cut/Braze
- Working at Heights
- Workplace Violence Prevention

NASP National Association of Safety Professionals



ECSI & HSI

- Basic First Aid
- Advanced First Aid, CPR, AED
- Emergency Medical Responder
- Healthcare Provider CPR & AED



Highfield

- Highfield Level 1 Award in Food Safety in Catering
- Highfield Level 2 Award in Food Safety for Catering
- Highfield Level 2 Award in HACCP for Catering
- Highfield Level 2 Award in HACCP for Food Manufacturing
- Highfield Level 2 International Award in Emergency First Aid at Work
- Highfield Level 2 International Award in Fire Safety
- Highfield Level 2 International Award in Risk Assessment
- Highfield Level 3 Award in Food Safety for Catering
- Highfield Level 3 Award in HACCP for Caterers
- Highfield Level 3 Award in Risk Assessment
- Highfield Level 4 Award in Managing Food Safety in Catering
- Highfield Level 4 International Award in Managing HACCP for Catering
- Highfield Level 3 International Award in First Aid at Work and the Safe Use of an Automated External Defibrillator



ACC. No.CN. 15806





OSHACADEMY (Programs)

- 132-hour Occupational Safety and Health Professional
- 48-hour Occupational Safety and Health - Manager
- 44-hour Occupational Safety and Health - Specialist
- 36-hour Occupational Safety and Health - Supervisor
- 36-hour Safety Committee - Chair
- 36-hour Occupational Safety and Health Trainer - (Train-the-Trainer)
- 32-hour Safety Committee - Member
- 30-hour General Industry - Safety and Health
- 20-hour Scaffold Inspector
- 145-hour Construction Site Safety - Supervisor
- 130-hour Construction Safety and Health - Specialist
- 47-hour Construction Safety and Health - Train-the-Trainer
- 30-hour Construction - Safety and Health
- 10-hour Construction - Safety and Health
- 233-hour Oil and Gas Safety and Health Professional
- 192-hour Oil and Gas Safety and Health - Manager
- 164-hour Oil and Gas Safety and Health - Supervisor
- 155-hour Oil and Gas Safety and Health - Specialist



- 11-hour Tattoo and Body Art Employee Safety
- 10-hour Healthcare - Housekeeping Safety
- 10-hour Healthcare - Sonography Safety
- 10-hour Healthcare - Emergency Department Safety
- 10-hour Employee Occupational Safety and Health
- 10-hour General Industry - Housekeeping
- 10-hour General Industry - Restaurant Safety
- 10-hour General Industry - Warehouse Safety
- 10-hour General Industry - Safety and Health
- 192-hour Construction Safety and Health Professional
- 162-hour Construction Safety and Health - Manager
- 70-hour Oil and Gas Safety and Health - Train-the-Trainer
- 20-hour Healthcare - Administration Safety
- 15-hour Healthcare - Hospital Safety Specialist
- 15-hour Healthcare - Laboratory Safety
- 10-hour Healthcare - Radiology Safety
- 10-hour Healthcare - Pharmacy Safety
- 10-hour Healthcare - Central Supply Safety
- 10-hour Healthcare - Laundry Safety
- 10-hour Healthcare - Hospital ICU Safety
- 10-hour Healthcare - Physical Therapy Safety

OSHACADEMY (Courses)

- 105 Hazard Communication - Basic
- 107 Emergency Action and Fire Prevention Plans
- 108 Personal Protective Equipment - Basic
- 112 Introduction to Safety Supervision
- 113 Introduction to Safety Leadership
- 114 Walking-Working Surfaces and Fall Protection
- 115 Electrical Safety for Employees - Basic
- 116 Introduction to Safety Accountability Programs
- 117 Introduction to Safety Recognition Programs
- 105 Hazard Communication - Basic
- 107 Emergency Action and Fire Prevention Plans
- 108 Personal Protective Equipment - Basic
- 112 Introduction to Safety Supervision
- 113 Introduction to Safety Leadership
- 114 Walking-Working Surfaces and Fall Protection
- 115 Electrical Safety for Employees - Basic
- 116 Introduction to Safety Accountability Programs
- 117 Introduction to Safety Recognition Programs



- 105 Hazard Communication - Basic
- 107 Emergency Action and Fire Prevention Plans
- 108 Personal Protective Equipment - Basic
- 112 Introduction to Safety Supervision
- 113 Introduction to Safety Leadership
- 114 Walking-Working Surfaces and Fall Protection
- 115 Electrical Safety for Employees - Basic
- 116 Introduction to Safety Accountability Programs
- 117 Introduction to Safety Recognition Programs
- 119 Driver Safety
- 121 Introduction to Safety Training
- 122 Introduction to Hazard Controls
- 123 Introduction to Job Hazard Analysis (JHA)
- 138 Workplace Hygiene and Illness Prevention
- 139 Guidance for Cleaning and Disinfecting
- 141-001 Hydrogen Sulfide (H2S) Safety
- 144 Introduction to OSHA
- 150 Physical Health Hazards in Construction
- 151 Biological Health Hazards in Construction
- 152 Ergonomic Hazards in Construction
- 153 Ergonomic Hazards in general Industry
- 154 Machine Safeguarding - Basic
- 155 Welding Safety - Basic
- 156 Forklift Safety - Basic
- 157 Excavation Safety - Basic
- 158 Crane Safety - Basic
- 159 Hearing Protection - Basic
- 160 Tool Safety - Basic
- 161 Industrial Hygiene - Basic
- 161-001 Process Safety Management (PSM)



- 162 Accident Investigation - Basic
- 170 Healthcare - Latex Allergy
- 171 Healthcare - Hazardous Chemicals
- 172 Healthcare - Glutaraldehyde Safety
- 173 Healthcare - Mercury Safety
- 174 Healthcare - Fire Safety
- 175 Healthcare - Biological Hazards
- 176 Healthcare - Workplace Stress and Violence
- 177 Healthcare - Electrical Safety
- 178 Healthcare - Personal Protective Equipment
- 179 Healthcare - Introduction to Common Hospital Hazards
- 180 Healthcare - Hospital Helipad Safety
- 181 Healthcare - Sharps Safety
- 182 Healthcare - Ethylene Oxide Safety
- 183 Healthcare - Radiation Safety
- 184 Healthcare - Asbestos Safety
- 570 School Safety - Athletics Supervision
- 571 School Safety - Exterior Facilities
- 575 School Safety - Crisis Planning
- 600 Introduction to Occupational Safety and Health
- 601 Essentials of Occupational Safety and Health
- 602 Heat and Cold Stress Safety
- 603 Stairway and Ladder Safety
- 604 Scaffold Safety
- 605 Confined Space Safety
- 606 Hazard Communication for the Employee
- 607 Tattoo and Body Art Safety
- 608 Dental Office Safety
- 609 Health Hazards in Nail Salons
- 610 Housekeeping Safety



- 631 Healthcare - Surgical Suite Safety
- 633 Healthcare - Hospital Emergency Room Safety
- 638 Preparing Workplaces for COVID-19
- 639 Operating Schools During COVID-19 - CDC Guidelines
- 643 Developing a COVID Prevention Program
- 644 Understanding OSHA
- 654 Lead Safety in General Industry
- 655 Bloodborne Pathogens in the Workplace
- 656 Bloodborne Pathogens in the Healthcare Setting
- 700 Introduction to Safety Management
- 701 Effective Safety Committee Operations
- 702 Effective Accident Investigation
- 703 Introduction to OSH Training
- 704 Hazard Analysis and Control
- 705 Hazard Communication Program
- 706 Job Hazard Analysis
- 707 Effective Safety Committee Meetings
- 708 OSHA Recordkeeping Basics
- 709 Personal Protective Equipment (PPE)
- 710 Energy Control Program - (Lockout/Tagout)
- 711 Introduction to Ergonomics
- 712 Safety Supervision and Leadership
- 713 Confined Space Program
- 714 Fall Protection Program
- 715 Electrical safety For Technicians & Supervisors
- 716 Safety Management System Evaluation
- 717 Emergency Action Plans
- 718 Fire Prevention Plans
- 719 Fleet Safety Management
- 720 Preventing Workplace Violence

- 611 Nail Gun Safety
- 612 Work Zone Traffic Safety
- 613 Worker Safety in Restaurants
- 614 Personal Protective and Lifesaving Equipment
- 615 Electrical Safety - Hazards and Controls
- 617 Managing Safety and Health - General Industry
- 618 Managing Safety and Health - Construction
- 619 Materials Handling Safety
- 621 Controlling Hazardous Energy - (Lockout/Tagout)
- 623 Healthcare - Preventing Ergonomic Injuries
- 624 Healthcare - Slip, Trip, and Fall Prevention
- 625 HIPAA Privacy Training
- 628 Healthcare - Sonography Safety
- 629 Planning for Workplace Emergencies
- 630 Healthcare - Pharmacy Safety



- 721 Developing OSH Training
- 722 Ergonomics Program Management
- 723 Conducting OSH Training
- 725 Powered Industrial Truck Safety
- 726 Introduction to Machine Guarding
- 736 Introduction to Process Safety Management (PSM)
- 738 Workplace Hygiene and Illness Prevention Program Management
- 744 Working with OSHA
- 745 Welding, Cutting, and Brazing Safety
- 750 Introduction to Industrial Hygiene
- 751 Hearing Conservation - Program Management
- 755 Bloodborne Pathogens - Program Management
- 756 Respiratory Protection
- 757 Laboratory Safety
- 765 Managing Workplace Stress



- 772 Introduction to Safe Patient Handling
- 773 Preventing MSDs - in Healthcare
- 774 Safe Patient Handling Program
- 776 Preventing Workplace Violence - in Healthcare
- 790 Environmental Management Systems (EMS)
- 800 Introduction to Construction Safety Management
- 802 Trench and Excavation Safety
- 803 Scaffold Safety Program (SSP)
- 804 Safe Scaffold Erection and Inspection
- 805 Fall Protection in Construction - Elements for Construction CFR 1926.500-503
- 806 Focus Four - Fall Hazards
- 807 Focus Four - Caught-In or -Between Hazards
- 808 Focus Four - Struck-by Hazards
- 809 Focus Four - Electrocution Hazards
- 810 Hand and Power Tool Safety
- 812 OSHA Focus Four Hazards
- 813 Construction Worksite Safety
- 814 Heavy Equipment Safety
- 815 Demolition Safety
- 816 Confined Spaces in Construction
- 817 Steel Erection Safety
- 820 Cranes and Derricks in Construction |
- 821 Cranes and Derricks in Construction II
- 833 Developing a Construction Safety Management System
- 850 Health Hazards in Construction
- 851 Silica Dust Safety in Construction
- 852 Asbestos Safety
- 854 Lead Safety in Construction
- 894 Lead Safety in Shipyards
- 895 Deck Barge Safety
- 900 Oil and Gas Safety Management
- 901 Oil and Gas Hazard Awareness
- 902 Well Site Preparation and Drilling Safety
- 903 Well Site Completion and Servicing Safety
- 904 Oil and Gas Well Inspection
- 906 Oil Spill Cleanup
- 907 Introduction to SEMS II - 30 CFR 250.1900-1933
- 908 Offshore Oil and Gas Safety I
- 909 Offshore Oil and Gas Safety II

SOFT SKILLS COURSES

Management Competencies

- Advanced Writing & Report Writing Skills
- Coaching and Mentoring
- Communication Skills
- Creative Problem Solving & Decision Making
- Crisis Management
- Effective Follow Up
- Finance for Non-Financial Managers
- Improving Staff Efficiency
- Innovation & Creativity
- Negotiating Skills
- Performance & KPI Management
- Planning and Scheduling
- Presentation Skills
- Setting Priorities & Goals
- Stress Management
- Team Building
- Time Management
- Training Needs Analysis
- Training the Trainers (TOT)





Project Management Courses

- Advanced Project Management
- Business Analysis for Project Success
- Business Analysis within a Project Environment
- Construction Administration for Engineers
- Managing Projects with MS Project 2016
- Oracle Primavera P6 Rel. 8.0 Fundamentals
- Portfolio Management and Corporate Finance Principles
- Project Management & Compliance
- Project Management for Non-Project Professionals
- Project Management Professional
- Stakeholders Management Achieving Consensus for Successful Project Execution
- The Project Management Professional (PMP®) Examination Preparation Course
- Working Effectively in Project Teams

Sales and marketing Skills

- Business Marketing
- Caring for Your Customers
- Communicating with the Customer
- Creating Your Sales Plan
- Progressing and Closing the Sale
- Sales Presentations and Demonstrations
- Starting the Sale
- Understanding Your Customer



ETON UNIVERSITY (MBA PROGRAMS)

Alam Alsaha collaborates with Eton University and approved learning centres in four countries (Egypt, Saudi Arabia, Bahrain, and Indonesia) to offer MBA, master's, and doctoral degrees.

Eton University is an international educational institution which aims to provide highly sought-after qualifications and valuable vocational training to various countries around the world.

Originating in Belize, America, Eton University began its worldwide mission to meet the demands of professionals desiring to continue their higher education.

Our study centres, combined with our online courses aim to uphold high standards and values delivered by world's most renowned universities, yet offer deliverance in more flexible and affordable way.

So whether you want to study at home, online or abroad, find out how Eton University can help you unlock your potential.

In 2017, Eton University opened a vocational training venue in one of the greatest cities in the UK. Located in the North West of England, Manchester is the third most visited city in the United Kingdom, Manchester.





MBA Programs

In the modern world, MBAs are widely seen as a passport to a successful career. Our MBA programs will give your students the skills needed to excel in functional competence, strategic knowledge and problem-solving ability. The modules are tailor to be flexible to almost any industry.

Like with the BSc Business Management, the online MBA is in two phases;

1- Postgraduate Diploma in Strategic Management and Leadership

2- MBA top-up*

*There are also two options for the MBA top-up. The first is fully online which is awarded by the University of Chichester. The second is blended, this is awarded by the University of Bolton and requires students to spend 7 months in the UK.

Phase one- Postgraduate Diploma in Strategic Management and Leadership

Delivery Formats for phase one:

Option 1 – Distance learning / Online Study

Option 2 – Blended learning in (Alam Alshara) Campus!!

Option 3 – Blended learning in the UK Eton University Campus

Phase two – MBA Top-up

There are Four options for the MBA top-up.

Option 1 – Eton University MBA; (Ava ilable in Distance, Online, Blended Learning as well as Study in UK with Student Visa

(6 assignments, 6 modules, 6-9 months)

Option 2 – Study online and achieve an MBA validated and awarded by the University of Chichester.

(15 weeks. Students will receive online webinars and sessions to help write their project)

Option 3 – Study in the UK and achieve an MBA validated and awarded by the University of Bolton.

(7 months Duration in UK - 2 modules plus dissertation)

Option 4 – Study in the UK and achieve an MBA validated and awarded by the University of Sunderland in London

(2 modules & dissertation - 7 months)

Eligibility for MBA

For students who do not have a bachelors degree, they may be eligible to enrol on the level 6 diploma in business management (equivalent to the final year of a bachelors degree).

This program offers students a fast-track route to gaining and MBA even if they do not have the traditional qualifications required.





PROCESS SAFETY MANAGEMENT



1. PSM/RBPS Training Courses

- HAZOP
- HAZID
- PHA
- LOPA
- BOW TIE
- PSM Awareness
- PSM Implementation
- RBPS Awareness
- RBPS Implementation
- Risk Management
- JSA/JHA

2. PSM/RBPS Service and Consultations

- Gap Assessment Phase
- Design And Tailored Phase
- Implementation Phase
- Management Support Phase



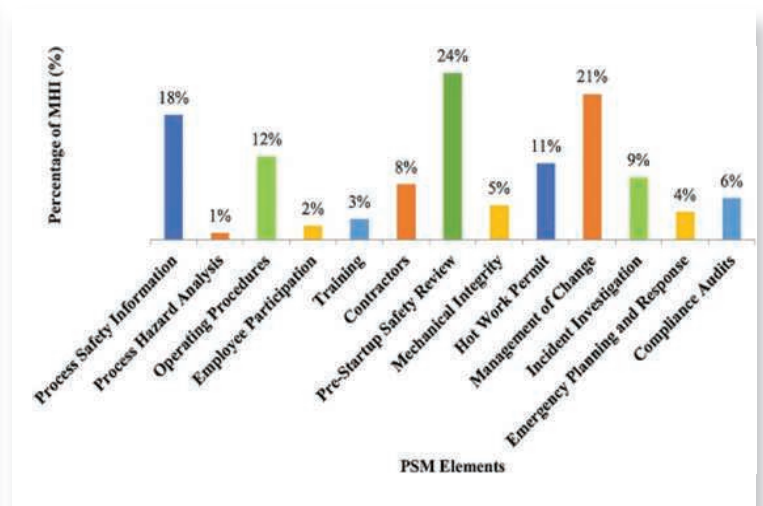
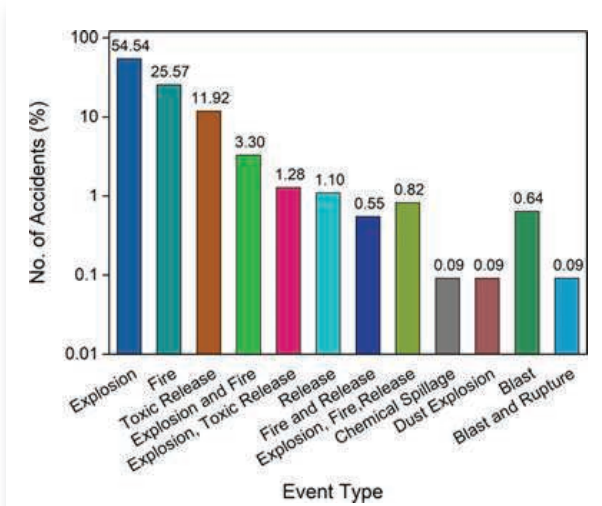
3. PSM / RBPS Accredited Education with ETON University (USA)

- PSM /RBPS Accredited Master Degree
- PSM/RBPS Accredited Doctoral Degree



4. PSM Certified Auditor Program with OSHA / OSHA Academy

The Program to be Conducted By a certified Tutor from OSHA and the Accredited Certificate to issued By OSHA Academy.





Alam Alshara

Petroleum Services; Training; Consulting and Supplies

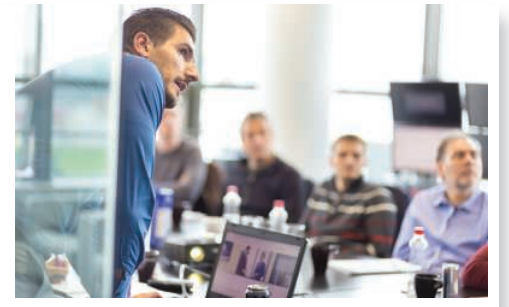
Consulting Department





About us

Our backgrounds are in both , with a combined total of more than 15 years of training and consulting expertise. We have worked in Algeria, Malaysia, Indonesia, Thailand, Brunei, Kuwait, Oman, the United Arab Emirates, Mauritania, Nigeria, Egypt, Bahrain, India, Pakistan, Turkey, Iran, Iraq, and Sudan, among other countries. After years of experience in these varied fields, we've decided to provide consultancy services to these areas.



Why do you need to select us as your business partner ?

We understand that completing a project requires more than a strategy; it need people and someone to manage that plan. These individuals are our most valuable resource.

Our reputation is built on offering just the best consultants with the best experience and attitudes. This is accomplished through the recommendation and provision of qualified, goal-oriented individuals for our clients' initiatives. Our experts assist in bridging the engineering-operations divide.



DRILLING OPERATIONS • COMPLETION OPERATIONS

We want to be present for the duration of your well's completion. Our drilling and completion consultants assist our clients in achieving excellence by operating safely and effectively. We understand how critical it is to keep costs down when bringing wells online. That is why we take pride in assisting our clients in completing their wells on time and within budget. Consider how our experience and communication skills might help you optimize your operation.



Geoscience Services



Geosteering services



Drilling & Completion



Projects and studies



Training



Consultants



Alam Alsahara

Petroleum Services; Training; Consulting and Supplies

Supply Chain Department





Introduction

The supply chain is an integral part of the organizational structure of the company, which provides multiple services to our customers around the world; we are passionate about our service that we provide as well as our customers and it shows in the level of service that we provide.

Professional teams; qualified to undertake the most challenging and diversified set of tasks in their line of business.

ALAM ALSAHARA's management went on a quest to bond with the leading manufacturers, distributors and suppliers to obtain joint venture agreements with the region's leading Oil & Gas sector companies.

Our customer support and account teams provide the best service in the industry/oil and gas sectors. Commitment to Quality, Health, Safety & Environment.



QHSE

We, at ALAM ALSAHARA, have given safety the highest possible attention. We realize that it's our responsibility to ensure safety, health, environment protection and the welfare of our staff and our clients' staff at all times.

At ALAM ALSAHARA, our staff are instructed and trained to strictly abide by all safety precautions and procedures.

ALAM ALSAHARA operations are always conducted in a manner that will protect personnel and property and minimize damage to the environment. Among the aspects we give special attention to are:

- SAFETY POLICIES AND REGULATIONS
- SAFETY STANDARDS FOR DRIVERS
- TRANSPORTATION SAFETY
- FIRE SAFETY, FIRE PREVENTION AND FIRE FIGHTING
- ACCIDENT & INCIDENT REPORTING

We achieve this by

- Promoting the conviction that all accidents can be avoided.
- Minimizing the impact of our activities on the environment while acknowledging and respecting the interests of local communities.
- Assuring a safe and healthy workplace for employees and personnel of contractors.
- Daily reporting and communicating HSE performance levels.
- Considering industry standards along with local and international regulations relating to HSE as a minimum which can be exceeded.



Our supply chain provides an outstanding Services such, general contracting, petroleum services, construction, establishing electricity and internet networks, communications technology industry, Databases Creation, Consulting, multiple and unlimited services Etc.

ALAM ALSAHARA is committed to deliver reliable state-of-the-art services to its clients. Its professional approach qualifies it to continue conquering new markets and to explore more opportunities.

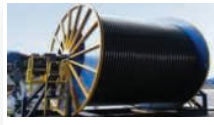
ALAM ALSAHARA believes in investing generously in human resources, adhering to high quality standards and adopting a continuous quest for excellence...



SELL AND RENT WIDE RANGE OF OILFIELD EQUIPMENT AND TOOLS



CT Units



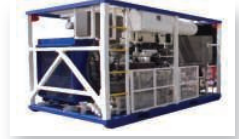
Coiled tubing strings



Nitrogen tanks



Fluid pumps



Nitrogen pumps



BOPs



Cement pumps



AirSprings



Bananas



Tanks



Transmission parts



Clamps



goods-cages



Fittings



Commercial Turnbuckles



Bolts



Bulldozers



Light towers



Power generators



Compressors



Security Systems



PPE



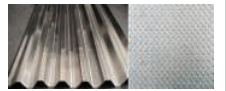
Fire extinguishers



Chemicals



Material Handling



Steel Sheet, angles



Webbing Sling



Pallet-lifters-&-cages



Gas Detectors



IBC Lifters



Containers



Caravans



Electrical parts



Electrical parts



Electrical parts



C-Pumps



Chemicals



Drilling bits



Eyebolts



Sensors and Transmitters



Actuators



Valves and seats



Treating iron



Electric-winch



Butterfly valves



Power ends



Repair kits



Oils



Low pressure gauges



Belts



Filters (Oil; Fuel; Air and Water)



Tires



Hydraulic hoses



Fluid pumps



Transfer hoses



HR Weight Gauges



Bearings



Mechanical parts



Shafts and joints



Seals; Packing and Bushings



Couplings



Tools



Hydraulic motors



Alternators



Coolers



Exhausted manifolds and Mufflers



Pistons



Turbochargers



Starters



Batteries



Alam Alshara

Petroleum Services; Training; Consulting and Supplies



ISO 9001 : 2015



ISO 14001 : 2015



ISO 45001 : 2018



Training & Consultation

Increasing competency & developing solutions for a better future



Rig Inspection

Helping You to Solve Your Problems



Supplies

Limitless solutions!


 **Egypt :** 51 Street 105, Maadi, Cairo, Egypt generalmgr@alamalsahara.co +20 10 058 96 555

 **Saudi Arabia :** Al-Khobar mall 3rd floor, KSA tcoordinator@alamalsahara.co +966 50 59 84 536

 **Bahrain :** No.470, Road 1010, Bl.410 Sanabis Area aabelaziz@alamalsahara.co +973 38 44 77 15


 **Indonesia :** Mampang, Jakarta Selatan 12790 coordinator.indo@alamalsahara.co +62 857 2668 8893

 **Libya :** Ali Bin Abi Talib St, Sukkra, Sabha, Libya consulting@alamalsahara.co +218 91 78 34 170

 **Sudan :** Sudan, Khartoum, Al Mamurah, Bl. 72 bdm.su@alamalsahara.co +249 12 20 50 651

 **Malaysia :** Putrajaya Wilayah Persekutuan bdm.mal@alamalsahara.co +603 88 61 00 00

 **North America :** Canada, Alberta, Grande Prairie bd.northamerica@alamalsahara.co +1(819) 319 8445

 **Romania :** Str. Galata nr. 55, bl. C, et. 6, ap. 41 bd.romania@alamalsahara.co +40 (738) 317 506

CONTACT US

